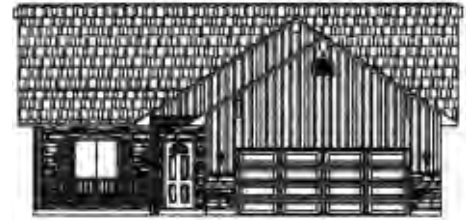
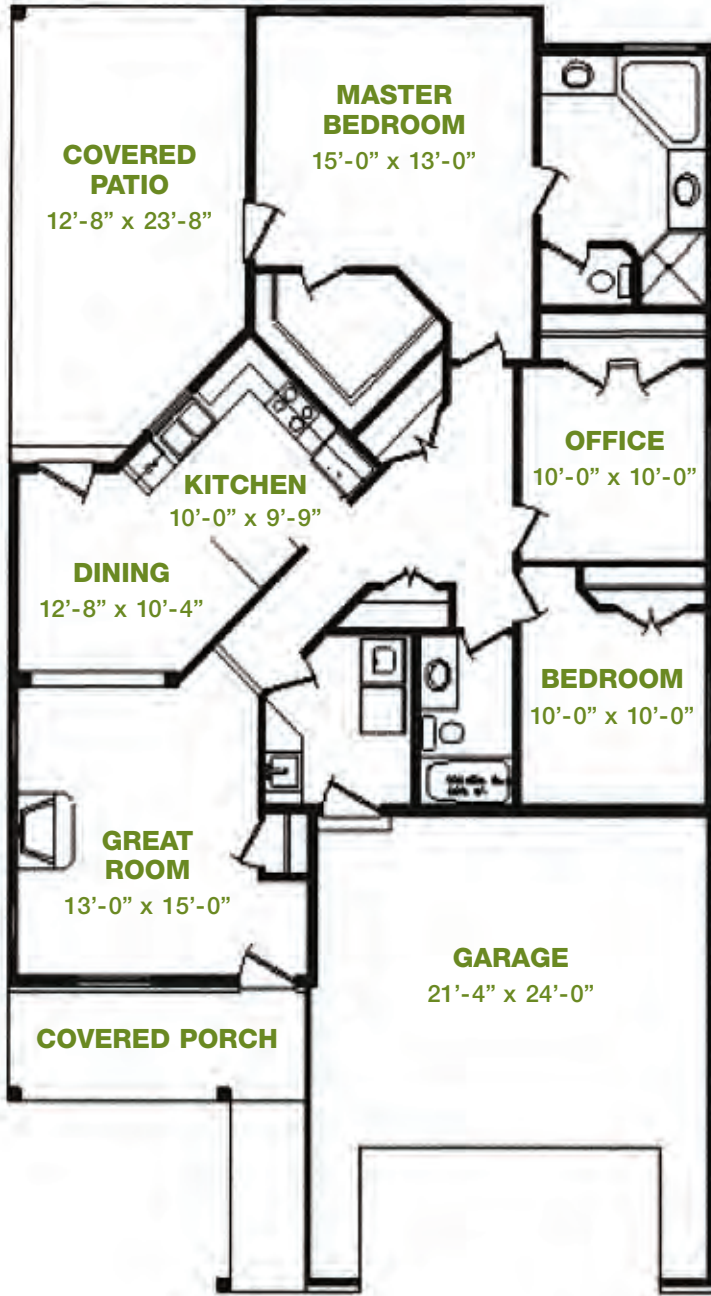


Yellowstone Model

Single Unit (unattached) • 3 Bedroom / 2 Bath • 1,463 sq. ft. (approx.)

\$269,500 / \$279,500 Lakeside



Elevation A



Elevation B



CEDAR SPRINGS
MEADOWS

STAR VALLEY, WYOMING

cedarspringsmeadows.com

Collen Lewis
Realtor®
Agent
307-413-6462



**COLDWELL
BANKER**
COUNTRY ESTATES



Patty Speakman
Realtor®
Associate Broker
307-880-1795

Yellowstone Model

Single Unit (unattached) • 3 Bedroom / 2 Bath • 1,463 sq. ft. (approx.)

\$269,500 / \$279,500 Lakeside

Features

COMMUNITY

- Mailbox Enclosures
- Enclosed Refuse Container
- Paved Roads
- Street Lights
- Walking Paths
- Self-Contained Water System
- Grounds Maintenance
- Snow Removal
- RV Storage Available
- Storage Units Available
- Open Park Areas
- Picnic Areas
- Beautiful Setting Between Two Mountain Ranges
- Gorgeous Pond Areas
- Close To Three Golf Courses
- Community Club House To Be Constructed When 50% Complete
- Assisted Living Complex To Be Constructed When 100% Complete

HOUSE SECURITY

- Security Double Locks Installed On All Exterior Doors
- Automatic Garage Door Opener With Two Remote Transmitters
- Peephole On Front Entry For Clear Visibility
- Smoke Detectors
- Tempered Glass In Required Areas
- Pressure Balanced Control Valves Installed In All Showers To Protect Against Scalding

ENERGY-SAVING AND HOME WARRANTY FEATURES

- Extended Warranty Covering The Home For Structural Defects For Ten Years
- Manufacturer's Warranties On All Appliances
- Insulated Raised Panel Steel Garage Door

- R44 Ceiling Insulation
- R21 Exterior Walls
- Insulation Between All Bathroom Walls For Noise Suppression
- Raised Height Bath Vanity Counters In Master Bathrooms

GOURMET KITCHENS

- GE Full Appliance Package
 - 22 cu. ft. Side-By-Side Refrigerator With Icemaker
 - Multi-Cycle Efficient Dishwasher
 - Electric Range With Self-Cleaning Oven
 - Microwave
- Double Sink With Garbage Disposal
- High Quality Kitchen Cabinets (Knotty Cherry, Knotty Alder, Knotty Hickory)
- Kitchen Faucet (Kohler or Moen)

ELEGANT BATHS TO PAMPER YOU

- Spacious Tiled Master Shower
- His And Her Separate Sinks And Dressing Space (Per Plan)
- Full Width Vanity Mirrors
- Elongated And Comfort Height Commodes In All Bathrooms
- Walk-In Closet
- Tile Flooring In Master Bath

INTERIOR FEATURES

- Wood Flooring In Great Room, Kitchen and Dining Area
- Vaulted Tongue-And-Groove Knotty Pine Ceiling In Great Room
- Gas Stove With Stone Surround
- Wall-To-Wall Carpet In A Choice Of Designer Colors
- Solid Core Wood Doors
- Upgraded Wood Casing And Baseboards
- 9 ft. Walls Throughout

LAUNDRY ROOM

- Vinyl Flooring
- Storage Cabinets
- Utility Sink (Per Plan)

EXTERIOR FEATURES

- Insulated Windows
- Spacious, Full-Size Heated Two-Car Garage
- Covered Patios
- Covered Porches
- Two (2) Outside, Weatherproofed Duplex Outlets
- Outdoor Lighting
- Central Water
- 30 Year Architectural Composition Roof
- 2 x 6 Exterior Walls

CONSTRUCTION FEATURES

All construction meets or exceeds Universal Building Code (UBC)

ADDITIONAL PRICED OPTIONS

- Solid Surface Or Tile Counter Tops
- Wood Flooring Throughout
- Tile Flooring
- Gas Range



CEDAR SPRINGS
MEADOWS

STAR VALLEY, WYOMING

cedarspringsmeadows.com

Collen Lewis
Realtor®
Agent
307-413-6462



Patty Speakman
Realtor®
Associate Broker
307-880-1795

Yellowstone Model

Single Unit (unattached) • 3 Bedroom / 2 Bath • 1,463 sq. ft. (approx.)

\$269,500 / \$279,500 Lakeside

Site Map



CEDAR SPRINGS
MEADOWS

STAR VALLEY, WYOMING

cedarspringsmeadows.com

Collen Lewis
Realtor®
Agent
307-413-6462



**COLDWELL
BANKER**
COUNTRY ESTATES



Patty Speakman
Realtor®
Associate Broker
307-880-1795